

Recorded Steps

This file contains all the steps and information that was recorded to help you describe the recorded steps to others. Before sharing this file, you should verify the following:

- The steps below accurately describe the recording.
- There is no information below or on any screenshots that you do not want others to see.

Passwords or any other text you typed were not recorded, except for function and shortcut keys that you used.

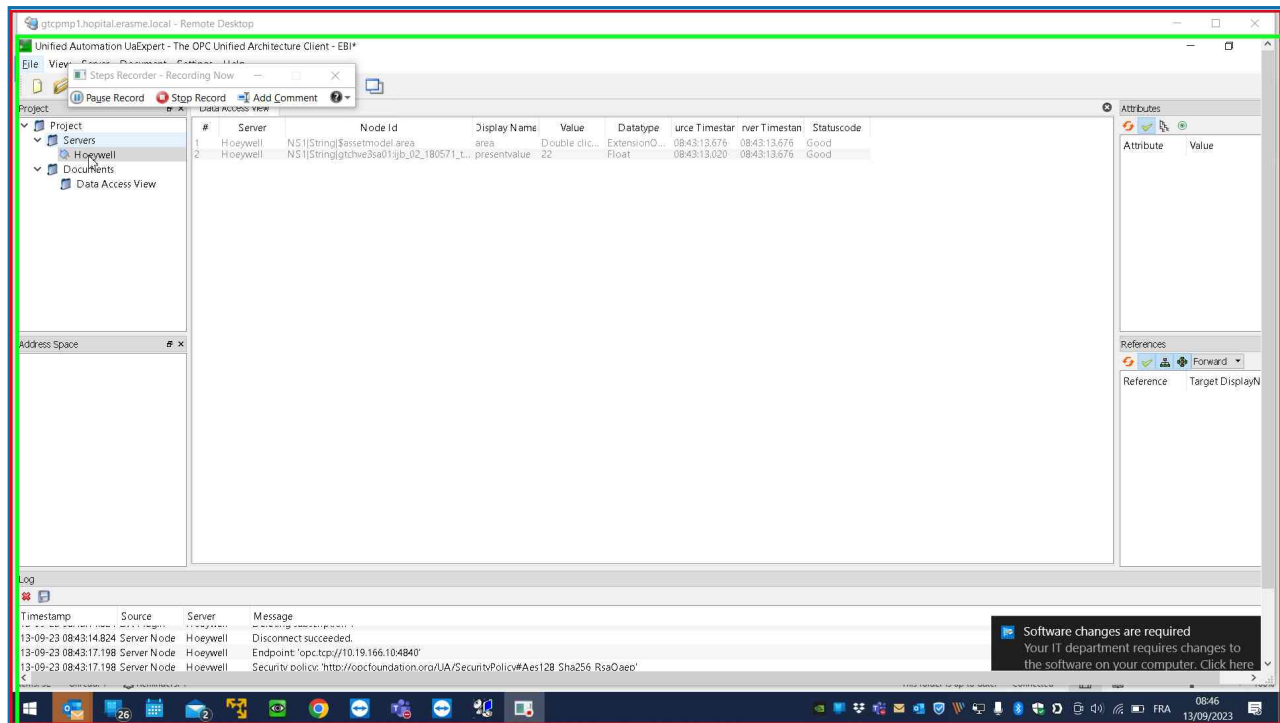
You can do the following:

- [Review the recorded steps](#)
- [Review the recorded steps as a slide show](#)
- [Review the additional details](#)

Steps

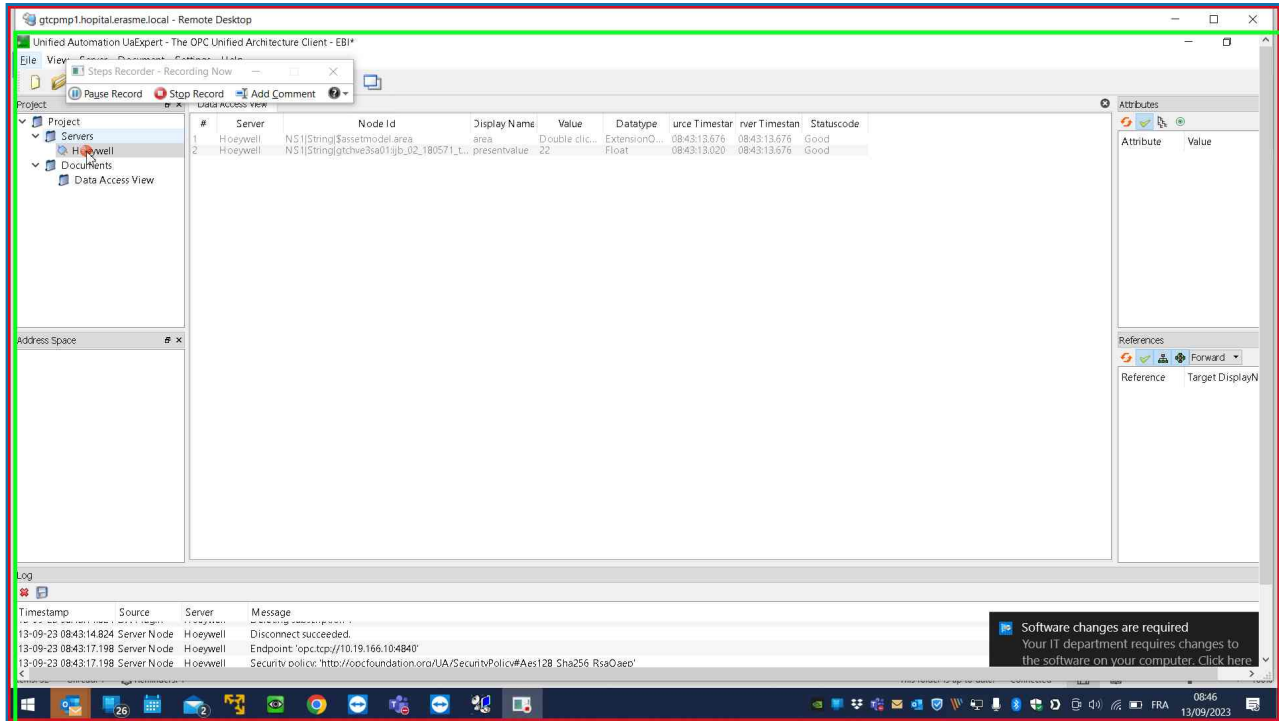
[Next](#)

Step 1: (13/09/2023 08:46:05) User right click on "Input Capture Window (pane)" in "gtcump1.hopital.erasme.local - Remote Desktop"



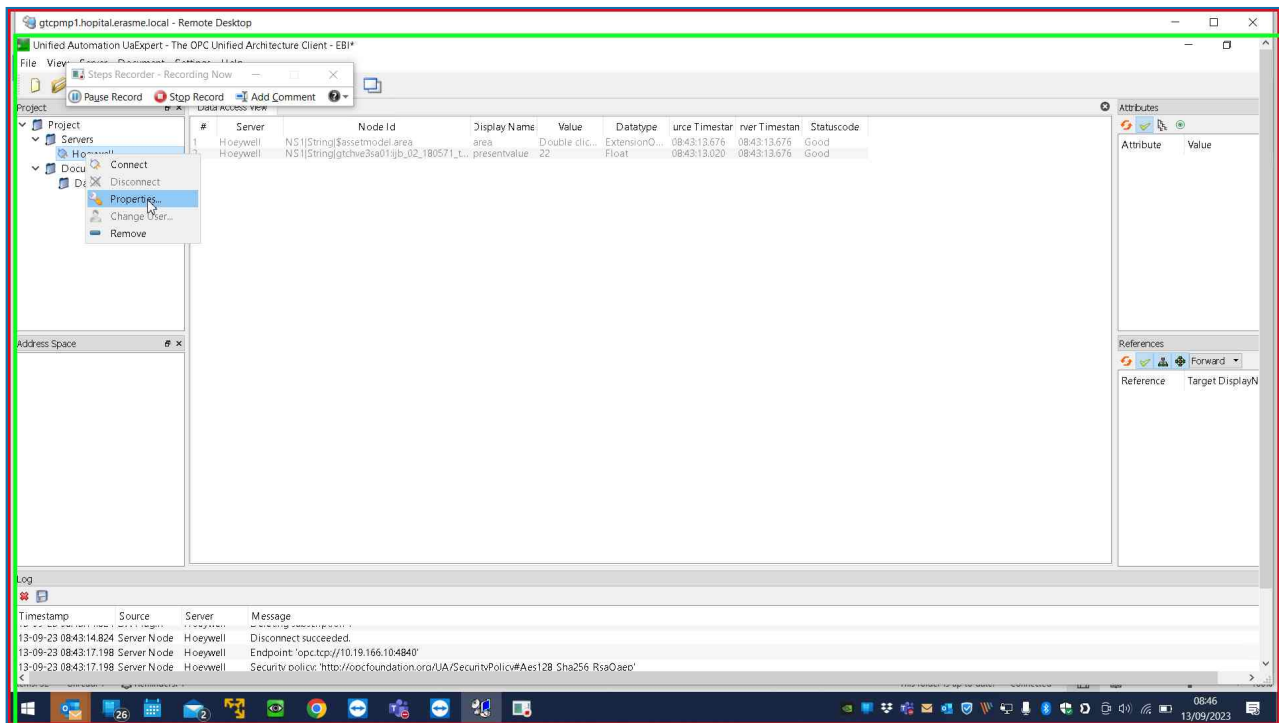
[Previous](#) [Next](#)

Step 2: (13/09/2023 08:46:05) User keyboard input on "Input Capture Window (pane)" in "gtcump1.hopital.erasme.local - Remote Desktop" [...]



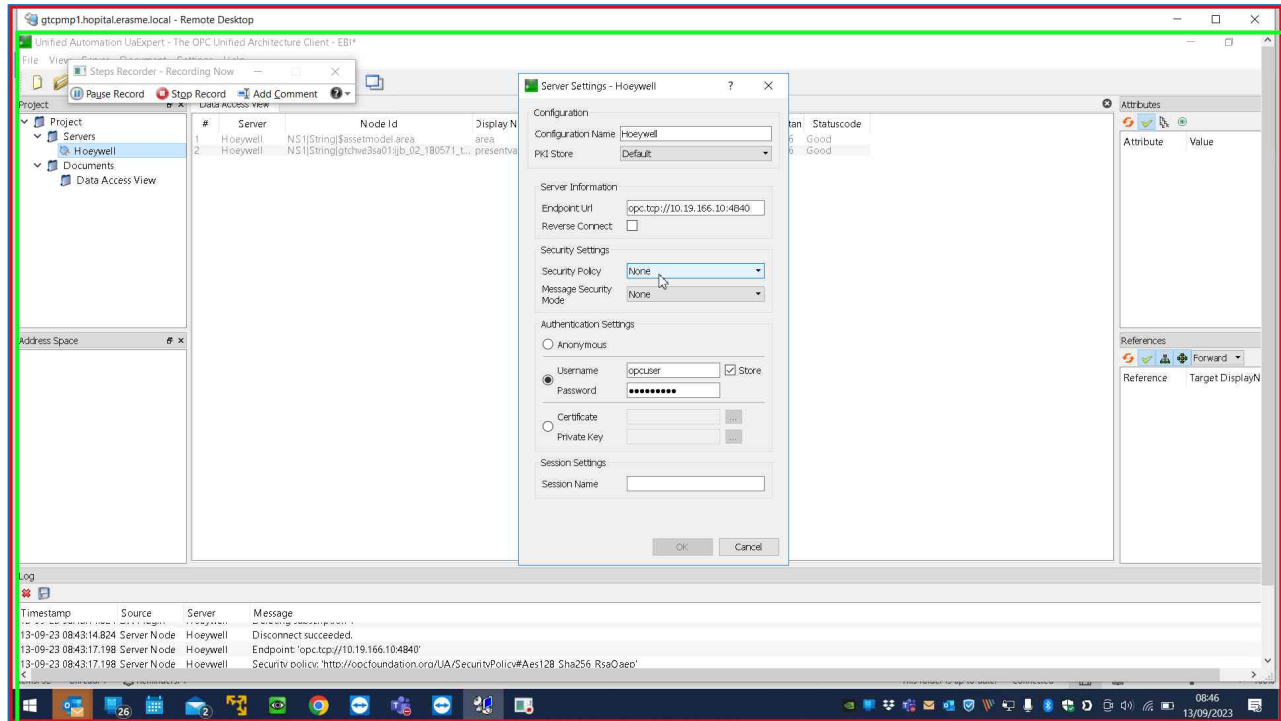
[Previous](#) [Next](#)

Step 3: (13/09/2023 08:46:07) User left click on "Input Capture Window (pane)" in "gtcpcmp1.hospital.erasme.local - Remote Desktop"

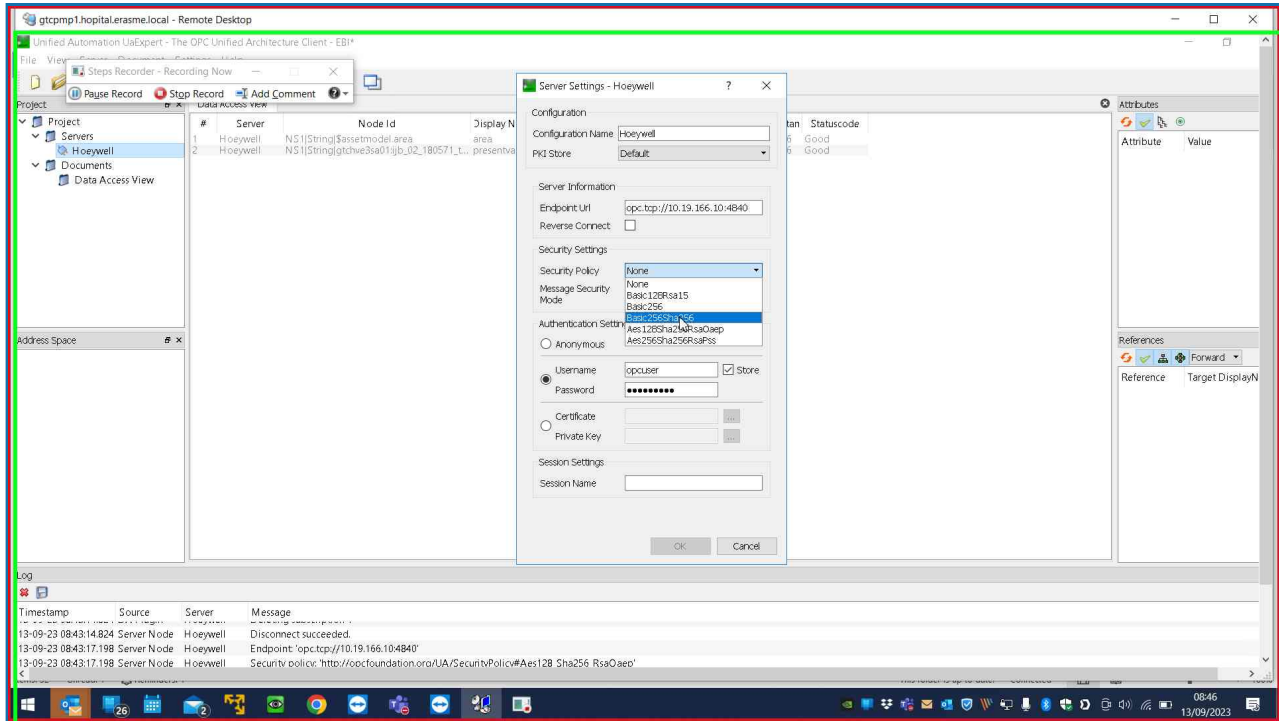


[Previous](#) [Next](#)

Step 4: (13/09/2023 08:46:09) User left click on "Input Capture Window (pane)" in "gtcprmp1.hospital.erasme.local - Remote Desktop"

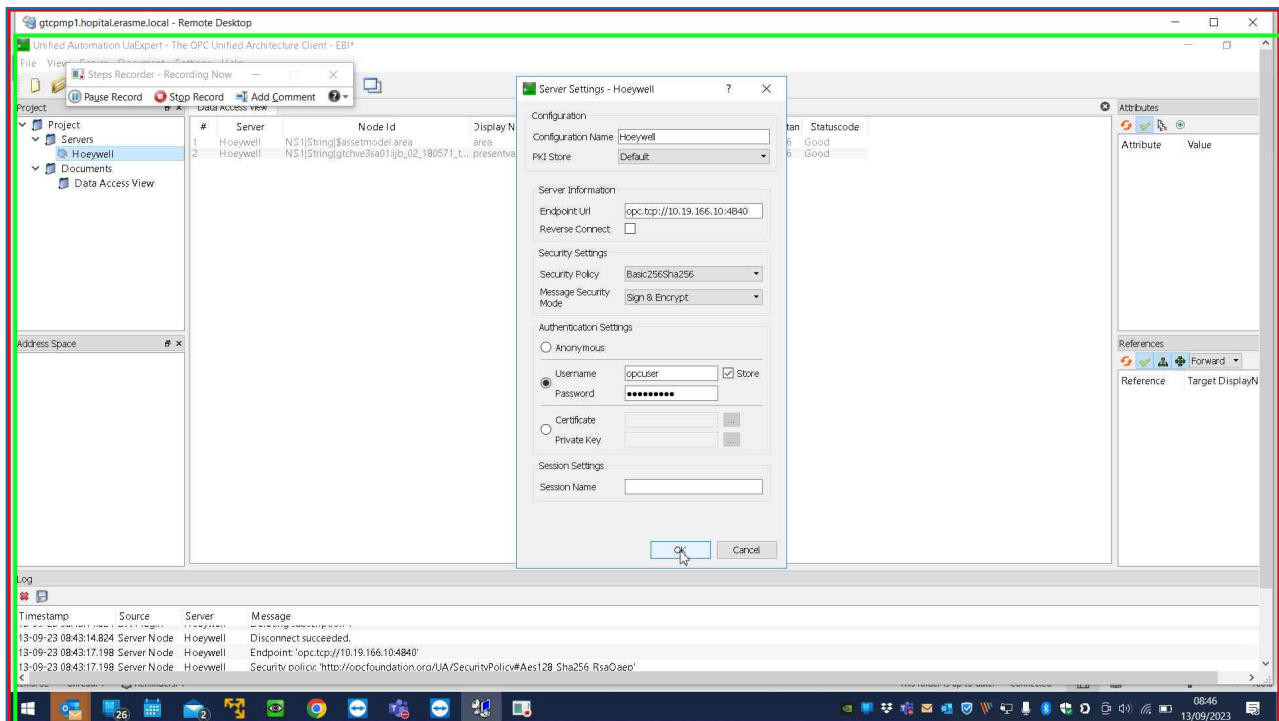
[Previous](#) [Next](#)

Step 5: (13/09/2023 08:46:11) User left click on "Input Capture Window (pane)" in "gtcprmp1.hospital.erasme.local - Remote Desktop"



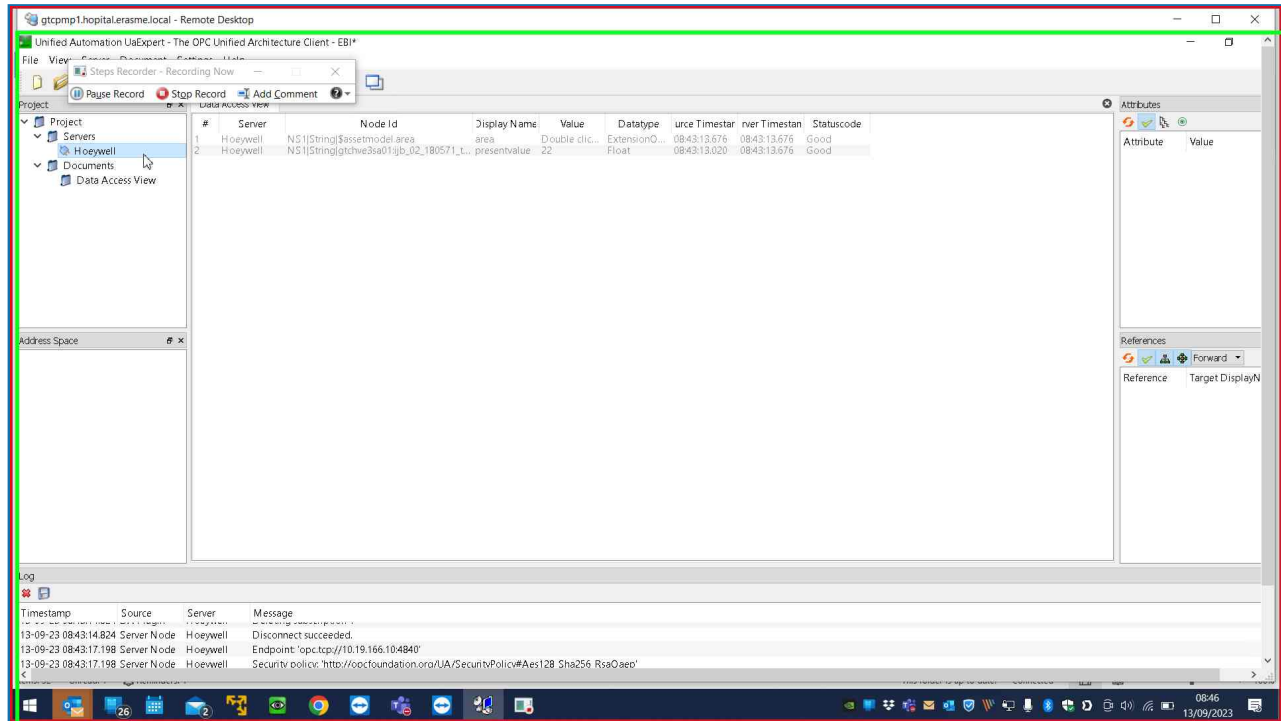
[Previous](#) [Next](#)

Step 6: (13/09/2023 08:46:13) User left click on "Input Capture Window (pane)" in "gtcpcmp1.hospital.erasme.local - Remote Desktop"

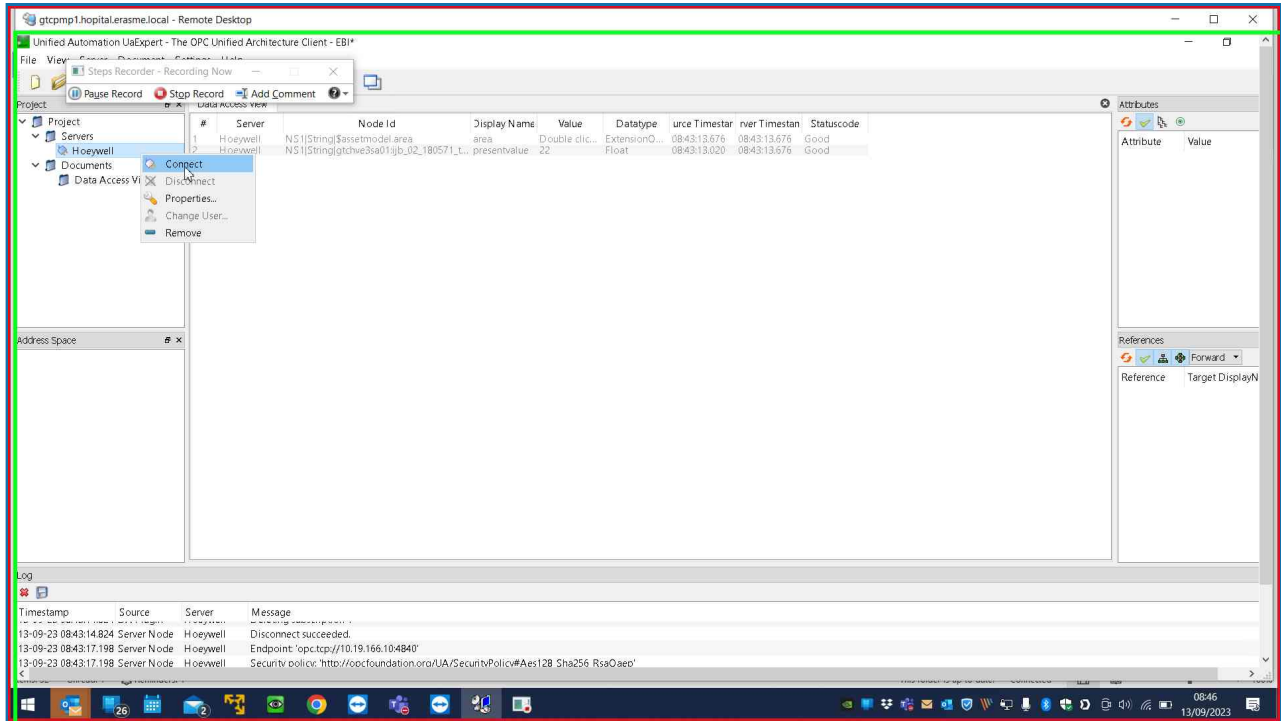


[Previous](#) [Next](#)

Step 7: (13/09/2023 08:46:16) User right click on "Input Capture Window (pane)" in "gtcpmp1.hopital.erasme.local - Remote Desktop"

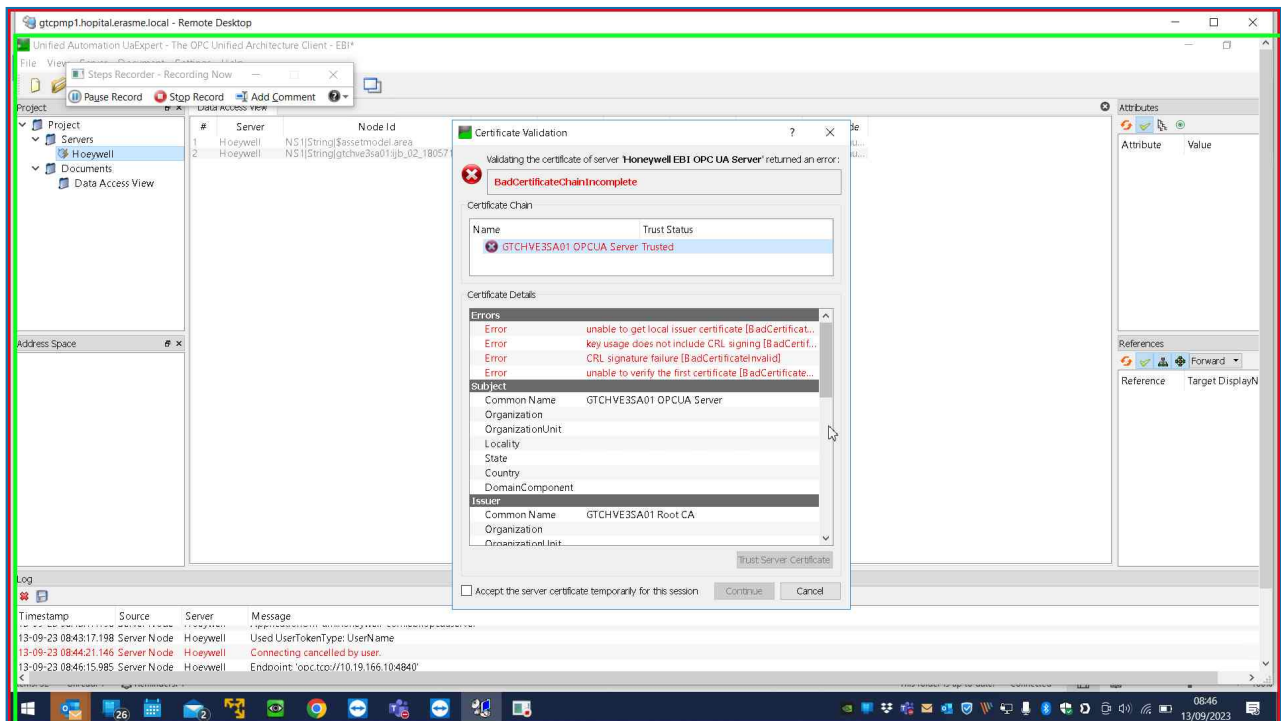
[Previous](#) [Next](#)

Step 8: (13/09/2023 08:46:17) User left click on "Input Capture Window (pane)" in "gtcpmp1.hopital.erasme.local - Remote Desktop"



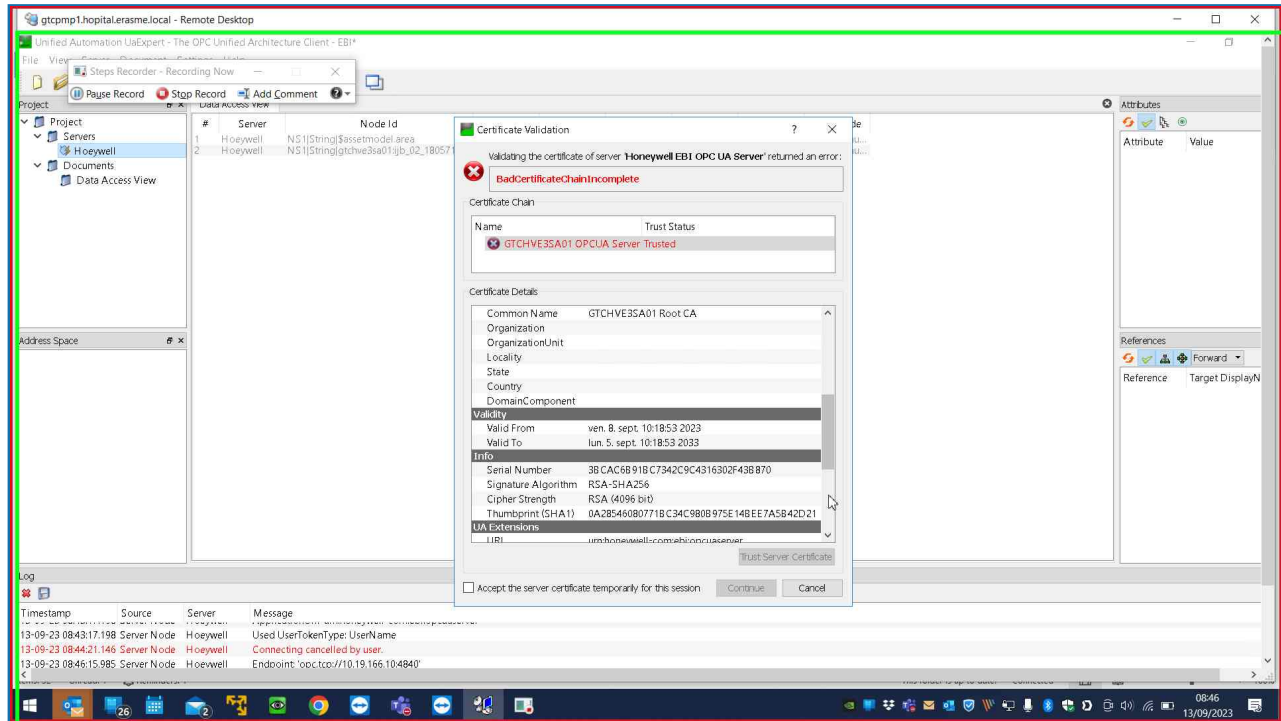
[Previous](#) [Next](#)

Step 9: (13/09/2023 08:46:22) User left click on "Input Capture Window (pane)" in "gtcpcmp1.hospital.erasme.local - Remote Desktop"

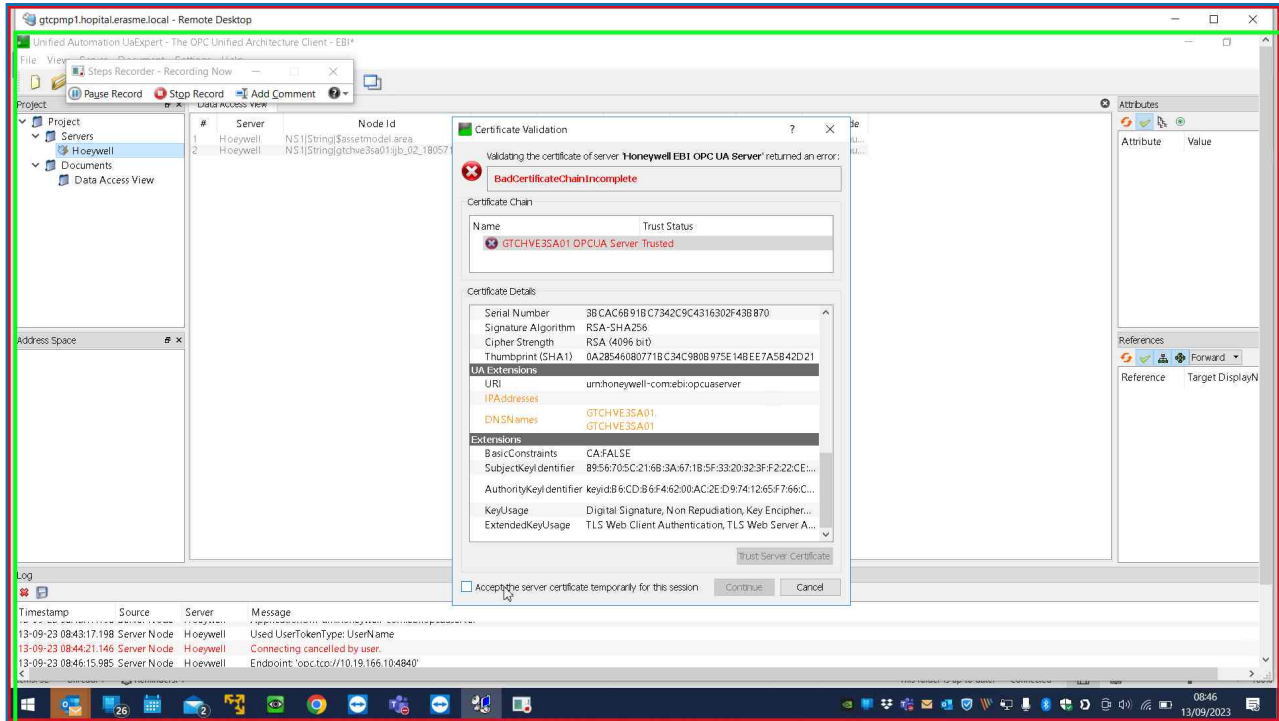


[Previous](#) [Next](#)

Step 10: (13/09/2023 08:46:24) User left click on "Input Capture Window (pane)" in "gtcpcmp1.hospital.erasme.local - Remote Desktop"

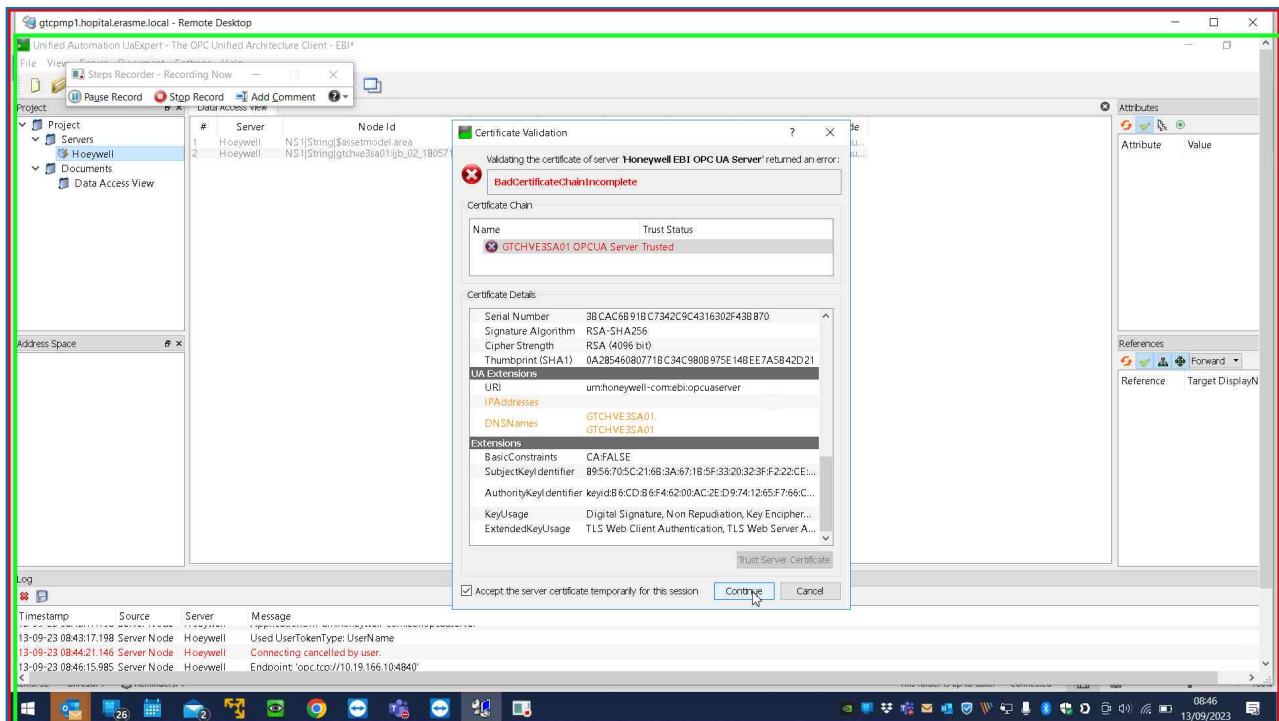
[Previous](#) [Next](#)

Step 11: (13/09/2023 08:46:26) User left click on "Input Capture Window (pane)" in "gtcpcmp1.hospital.erasme.local - Remote Desktop"



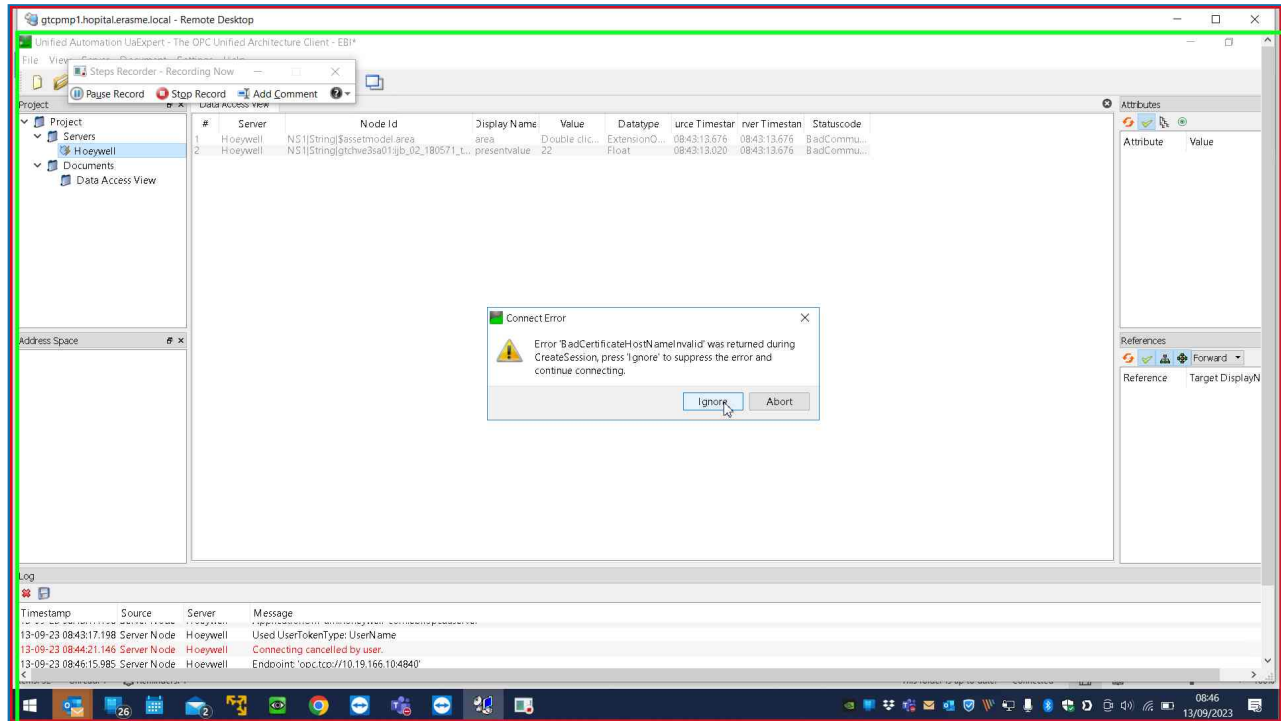
[Previous](#) [Next](#)

Step 12: (13/09/2023 08:46:28) User left click on "Input Capture Window (pane)" in "gtcpcmp1.hopital.erasme.local - Remote Desktop"

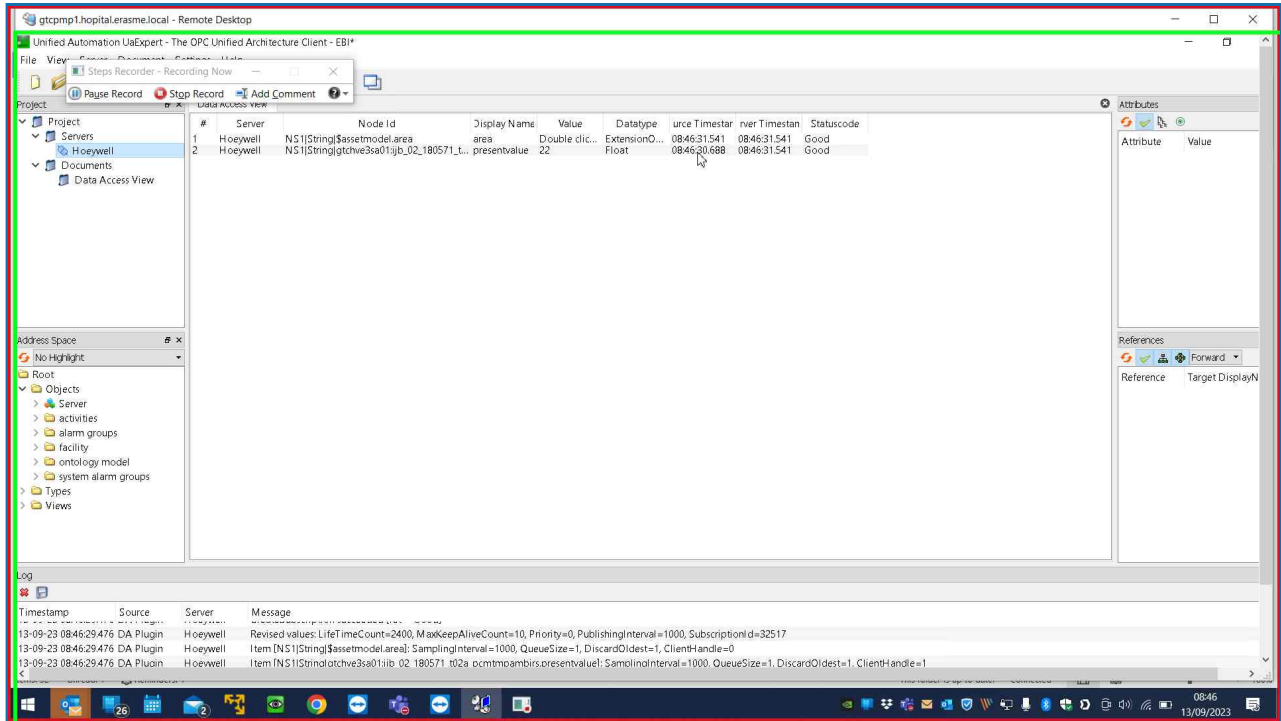


[Previous](#) [Next](#)

Step 13: (13/09/2023 08:46:30) User left click on "Input Capture Window (pane)" in "gtcump1.hopital.erasme.local - Remote Desktop"

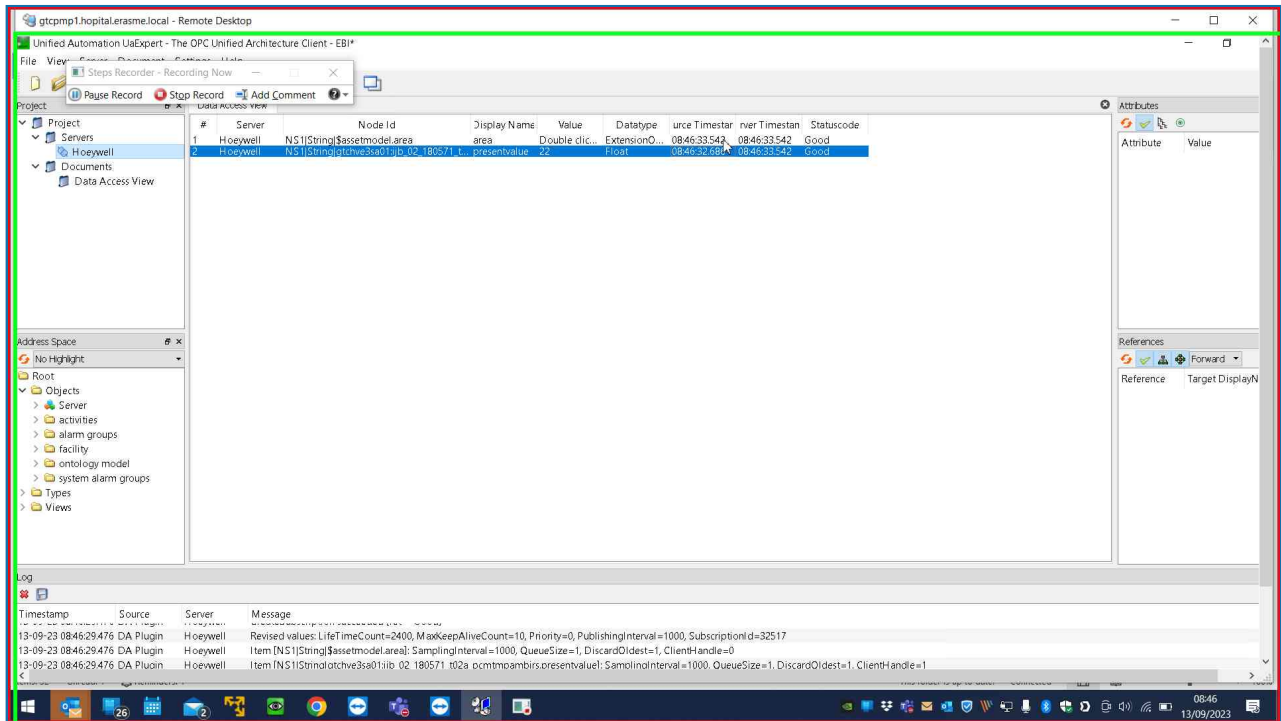
[Previous](#) [Next](#)

Step 14: (13/09/2023 08:46:34) User left click on "Input Capture Window (pane)" in "gtcump1.hopital.erasme.local - Remote Desktop"



[Previous](#)

Step 15: (13/09/2023 08:46:36) User left click on "Input Capture Window (pane)" in "gtcprmp1.hospital.erasme.local - Remote Desktop"



[Return to top of page...](#)

Additional Details

The following section contains the additional details that were recorded.

These details help accurately identify the programs and UI you used in this recording.

This section may contain text that is internal to programs that only very advanced users or programmers may understand.

Please review these details to ensure that they do not contain any information that you would not like others to see.

Recording Session: 13/09/2023 08:46:03 - 08:46:43

Recorded Steps: 15, Missed Steps: 0, Other Errors: 0

Operating System: 19041.1.amd64fre.vb_release.191206-1406 10.0.0.0.2.48

Step 1: User right click on "Input Capture Window (pane)" in "gtcpmp1.hopital.erasme.local - Remote Desktop"

Program: Pulse Secure Terminal Services Client, 9, 1, 17, 22379, Pulse Secure, LLC, DSTERMSERV.EXE /OLDINSTALL, DSTERMSERV.EXE

UI Elements: Input Capture Window, IHWindowClass, UIContainerClass, gtcpmp1.hopital.erasme.local, UIMainClass, ATL:66AB8000, AtlAxWin140, gtcpmp1.hopital.erasme.local - Remote Desktop, NeoterisTermServices

Step 2: User keyboard input on "Input Capture Window (pane)" in "gtcpmp1.hopital.erasme.local - Remote Desktop" [...]

Program: Pulse Secure Terminal Services Client, 9, 1, 17, 22379, Pulse Secure, LLC, DSTERMSERV.EXE /OLDINSTALL, DSTERMSERV.EXE

UI Elements: Input Capture Window, IHWindowClass, UIContainerClass, gtcpmp1.hopital.erasme.local, UIMainClass, ATL:66AB8000, AtlAxWin140, gtcpmp1.hopital.erasme.local - Remote Desktop, NeoterisTermServices

Step 3: User left click on "Input Capture Window (pane)" in "gtcpmp1.hopital.erasme.local - Remote Desktop"

Program: Pulse Secure Terminal Services Client, 9, 1, 17, 22379, Pulse Secure, LLC, DSTERMSERV.EXE /OLDINSTALL, DSTERMSERV.EXE

UI Elements: Input Capture Window, IHWindowClass, UIContainerClass, gtcpmp1.hopital.erasme.local, UIMainClass, ATL:66AB8000, AtlAxWin140, gtcpmp1.hopital.erasme.local - Remote Desktop, NeoterisTermServices

Step 4: User left click on "Input Capture Window (pane)" in "gtcpmp1.hopital.erasme.local - Remote Desktop"

Program: Pulse Secure Terminal Services Client, 9, 1, 17, 22379, Pulse Secure, LLC, DSTERMSERV.EXE /OLDINSTALL, DSTERMSERV.EXE

UI Elements: Input Capture Window, IHWindowClass, UIContainerClass, gtcpmp1.hopital.erasme.local, UIMainClass, ATL:66AB8000, AtlAxWin140, gtcpmp1.hopital.erasme.local - Remote Desktop, NeoterisTermServices

Step 5: User left click on "Input Capture Window (pane)" in "gtcpmp1.hopital.erasme.local - Remote Desktop"

Program: Pulse Secure Terminal Services Client, 9, 1, 17, 22379, Pulse Secure, LLC, DSTERMSERV.EXE /OLDINSTALL, DSTERMSERV.EXE

UI Elements: Input Capture Window, IHWindowClass, UIContainerClass, gtcpmp1.hopital.erasme.local, UIMainClass, ATL:66AB8000, AtlAxWin140, gtcpmp1.hopital.erasme.local - Remote Desktop, NeoterisTermServices

Step 6: User left click on "Input Capture Window (pane)" in "gtcpmp1.hopital.erasme.local - Remote Desktop"

Program: Pulse Secure Terminal Services Client, 9, 1, 17, 22379, Pulse Secure, LLC, DSTERMSERV.EXE /OLDINSTALL, DSTERMSERV.EXE

UI Elements: Input Capture Window, IHWindowClass, UIContainerClass, gtcpmp1.hopital.erasme.local, UIMainClass, ATL:66AB8000, AtlAxWin140, gtcpmp1.hopital.erasme.local - Remote Desktop, NeoterisTermServices

Step 7: User right click on "Input Capture Window (pane)" in "gtcpmp1.hopital.erasme.local - Remote Desktop"

Program: Pulse Secure Terminal Services Client, 9, 1, 17, 22379, Pulse Secure, LLC, DSTERMSERV.EXE /OLDINSTALL, DSTERMSERV.EXE

UI Elements: Input Capture Window, IHWindowClass, UIContainerClass, gtcppm1.hopital.erasme.local, UIMainClass, ATL:66AB8000, AtlAxWin140, gtcppm1.hopital.erasme.local - Remote Desktop, NeoterisTermServices

Step 8: User left click on "Input Capture Window (pane)" in "gtcppm1.hopital.erasme.local - Remote Desktop"

Program: Pulse Secure Terminal Services Client, 9, 1, 17, 22379, Pulse Secure, LLC, DSTERMSERV.EXE /OLDINSTALL, DSTERMSERV.EXE

UI Elements: Input Capture Window, IHWindowClass, UIContainerClass, gtcppm1.hopital.erasme.local, UIMainClass, ATL:66AB8000, AtlAxWin140, gtcppm1.hopital.erasme.local - Remote Desktop, NeoterisTermServices

Step 9: User left click on "Input Capture Window (pane)" in "gtcppm1.hopital.erasme.local - Remote Desktop"

Program: Pulse Secure Terminal Services Client, 9, 1, 17, 22379, Pulse Secure, LLC, DSTERMSERV.EXE /OLDINSTALL, DSTERMSERV.EXE

UI Elements: Input Capture Window, IHWindowClass, UIContainerClass, gtcppm1.hopital.erasme.local, UIMainClass, ATL:66AB8000, AtlAxWin140, gtcppm1.hopital.erasme.local - Remote Desktop, NeoterisTermServices

Step 10: User left click on "Input Capture Window (pane)" in "gtcppm1.hopital.erasme.local - Remote Desktop"

Program: Pulse Secure Terminal Services Client, 9, 1, 17, 22379, Pulse Secure, LLC, DSTERMSERV.EXE /OLDINSTALL, DSTERMSERV.EXE

UI Elements: Input Capture Window, IHWindowClass, UIContainerClass, gtcppm1.hopital.erasme.local, UIMainClass, ATL:66AB8000, AtlAxWin140, gtcppm1.hopital.erasme.local - Remote Desktop, NeoterisTermServices

Step 11: User left click on "Input Capture Window (pane)" in "gtcppm1.hopital.erasme.local - Remote Desktop"

Program: Pulse Secure Terminal Services Client, 9, 1, 17, 22379, Pulse Secure, LLC, DSTERMSERV.EXE /OLDINSTALL, DSTERMSERV.EXE

UI Elements: Input Capture Window, IHWindowClass, UIContainerClass, gtcppm1.hopital.erasme.local, UIMainClass, ATL:66AB8000, AtlAxWin140, gtcppm1.hopital.erasme.local - Remote Desktop, NeoterisTermServices

Step 12: User left click on "Input Capture Window (pane)" in "gtcppm1.hopital.erasme.local - Remote Desktop"

Program: Pulse Secure Terminal Services Client, 9, 1, 17, 22379, Pulse Secure, LLC, DSTERMSERV.EXE /OLDINSTALL, DSTERMSERV.EXE

UI Elements: Input Capture Window, IHWindowClass, UIContainerClass, gtcppm1.hopital.erasme.local, UIMainClass, ATL:66AB8000, AtlAxWin140, gtcppm1.hopital.erasme.local - Remote Desktop, NeoterisTermServices

Step 13: User left click on "Input Capture Window (pane)" in "gtcppm1.hopital.erasme.local - Remote Desktop"

Program: Pulse Secure Terminal Services Client, 9, 1, 17, 22379, Pulse Secure, LLC, DSTERMSERV.EXE /OLDINSTALL, DSTERMSERV.EXE

UI Elements: Input Capture Window, IHWindowClass, UIContainerClass, gtcppm1.hopital.erasme.local, UIMainClass, ATL:66AB8000, AtlAxWin140, gtcppm1.hopital.erasme.local - Remote Desktop, NeoterisTermServices

Step 14: User left click on "Input Capture Window (pane)" in "gtcppm1.hopital.erasme.local - Remote Desktop"

Program: Pulse Secure Terminal Services Client, 9, 1, 17, 22379, Pulse Secure, LLC, DSTERMSERV.EXE /OLDINSTALL, DSTERMSERV.EXE

UI Elements: Input Capture Window, IHWindowClass, UIContainerClass, gtcppm1.hopital.erasme.local, UIMainClass, ATL:66AB8000, AtlAxWin140, gtcppm1.hopital.erasme.local - Remote Desktop, NeoterisTermServices

Step 15: User left click on "Input Capture Window (pane)" in "gtcppm1.hopital.erasme.local - Remote Desktop"

Program: Pulse Secure Terminal Services Client, 9, 1, 17, 22379, Pulse Secure, LLC, DSTERMSERV.EXE /OLDINSTALL, DSTERMSERV.EXE

UI Elements: Input Capture Window, IHWindowClass, UIContainerClass, gtcppm1.hopital.erasme.local, UIMainClass, ATL:66AB8000, AtlAxWin140, gtcppm1.hopital.erasme.local - Remote Desktop, NeoterisTermServices

[Return to top of page...](#)