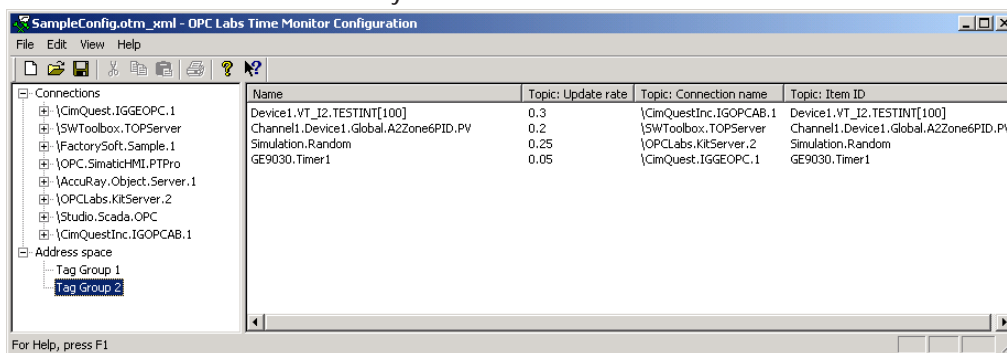


The OPC Time Monitor helps provide key operational information in your HMI/SCADA system without any programming effort. Data such as cycle time, time in and out of conditions you specify and more is calculated based on raw data from your OPC Servers. The OPC Time Monitor then serves this information up to your HMI/SCADA system or other OPC Data Access Client application.

Normally to create the kind of information the OPC Time Monitor provides, you would have to write code in your PLC, control system, or HMI software to get this kind of data. Through point and click configuration, the OPC Time Monitor becomes a transparent part of your system that saves you money day in and day out by helping you make your business and processes more efficient.

As an added bonus, the OPC Time Monitor allows you to filter which tags from your OPC servers you wish to present to other OPC applications and control the update rate at which they demand data from your OPC servers, helping you to manage the integrity and uptime of your data collection system.



## Core Aggregates Provided for Every Tag

- Tag in condition, out-of-condition or stable
- # of times a user-defined condition is met or not met (i.e. cycle counts)
- # of times a tag is in "stable" condition - you define what constitutes stable
- Average & Max time in condition, out-of-condition, and stable
- Total Time in condition, out-of-condition, and stable
- Actual timestamp of last change in condition

## Aggregate Features

- Times can be calculated based on client PC time or time stamps from target OPC server(s)
- Aggregates can be reset
  - By the client application
  - Based on user defined analog or digital tag with associated condition
- Previous and current set of all aggregates kept online all the time for comparison purposes
- Time values available as Date or String data types and as individual time subcomponents (hrs, mins, sec, etc).

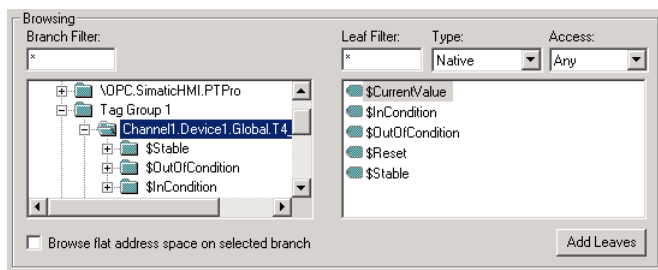
## General Features

- Aggregate values retained across restart of the OPC server or host PC
- Easy setup - No Programming Required
- Online help included
- Phone & Email Tech Support included
- OPC Server Data Access Compliance Tested
- OPC Client Interoperability Tested
- Connect local or remote OPC DA 1.0, 2.0, and 3.0 servers
- OPC Item Browsing Supported
- Filter tags shown to OPC clients and control scan rates passed to downstream servers
- Change data type returned by OPC server
- Configurable deadband and update rate
- Supply data to multiple OPC clients
- No limit on number of OPC servers users can collect data from with single instance of OPC Time Monitor
- Free Try Before you Buy Version

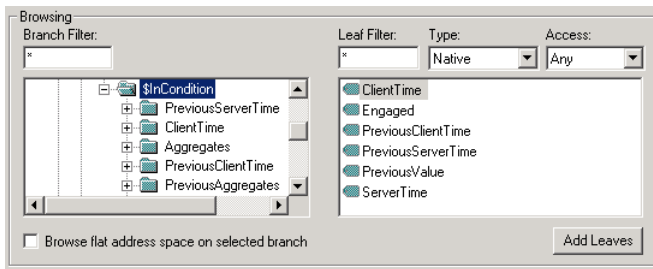
**Over for more details, screenshots, and ordering information...**

## Supported Client Applications

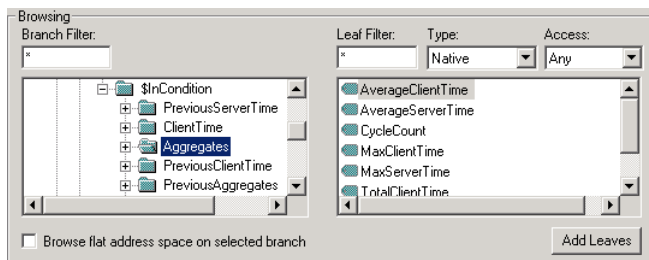
- Any OPC Data Access 2.x Client, including but not limited to . . .
- GE Fanuc Cimplicity
- Iconics
- iFix
- Indusoft
- GE Proficy iFix
- OSIsoft PI System
- RSVIEW
- Simatic ProTool
- Simatic WinCC
- Wonderware InTouch
- Wonderware System Platform
- Wonderware Historian
- Visual Basic/C++
- Visual Studio.NET



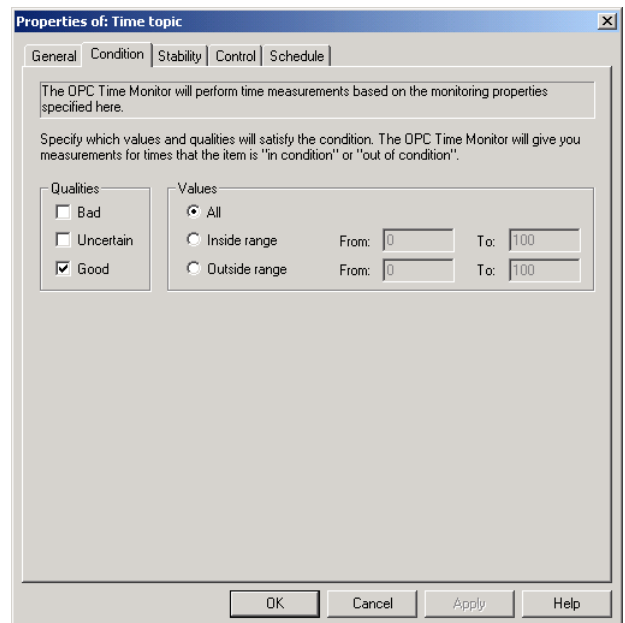
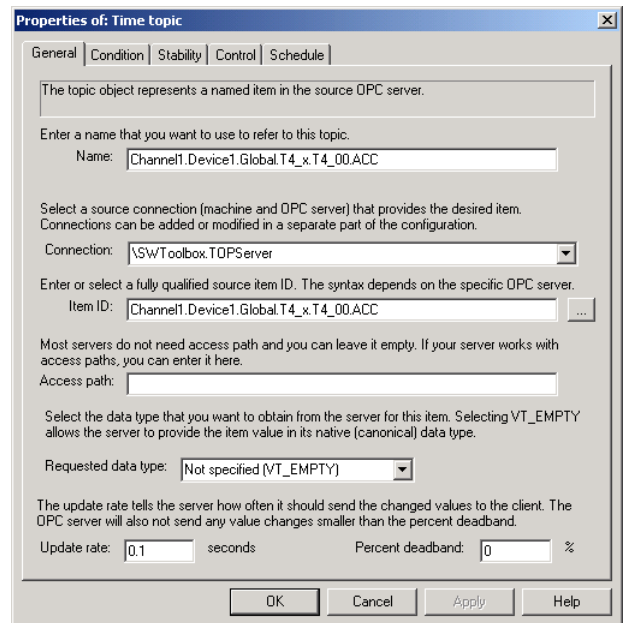
Browsing OPC Time Monitor with an OPC Client, Tag Top Level



Browsing tags associated with the "In Condition" state



Browsing Aggregate tags under the "In-Condition" state



Setting Criteria for "In-Condition"

## Ordering OPC Time Monitor

To order OPC Time Monitor, contact your nearest Software Toolbox products distributor or contact Software Toolbox. The demo version of OPC Time Monitor can be electronically converted to a licensed version and the product is available for internet or physical delivery.

**Item #: 41283101      OPC Time Monitor software, single license      US\$695**

OPC Time Monitor is licensed per computer. A license is required for each computer you plan to run the software on. Purchase of a single license entitles you to run OPC Time Monitor on a single computer and connect to as many local or remote OPC servers as you like without any tag count limits. Volume licensing discounts are available. Please contact your distributor or Software Toolbox to discuss your specific requirements.